



Shiftable planetary gear reducer

Data sheet

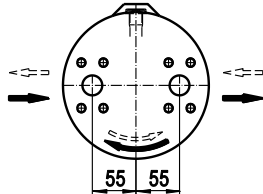
Md_{cont. max} 3'300 Nm

08.331G

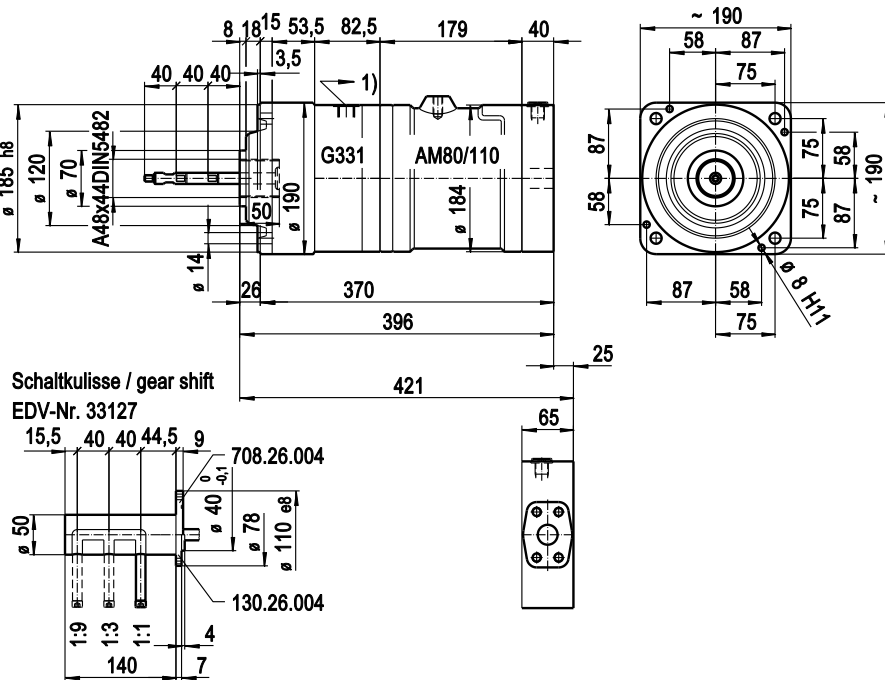
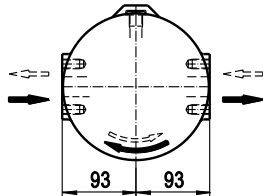
Md_{int. max} 4'950 Nm

english / 20120815/Wa

SAE 1" (420 bar) axial (08.331G)
ISO 6162-2 DN25 42 MPa



SAE 1" (420 bar) radial (08R331G)
ISO 6162-2 DN25 42 MPa



Oil connections:

- A) SAE 1" (420 bar) axial (08.331G) ISO 6162-2
DN25 42 MPa
- B) SAE 1" (420 bar) radial (08R331G) ISO 6162-2
DN25 42 MPa
- 1) Drain G1/2

C) Gear shift according drawing no. 203.95.3

Important instructions:

- Observe our installation and operating instructions
- Before start up fill planetary gear with oil
- Oil filling: approx. 3 Liter
- Weight: approx. 60 kg
- Fastening screw: M12 - 12.9 // Tightening torque: 150 Nm
- Gear shifting only while standstill

Possible special design:

- 2 position gear shift
- Fix gear ratio (without gear shift)

Technical data:

Denomination	EDV-No.	Output torque Nm						Output speed			Displacement Liter / rev.			Ratio		
		cont. 210 bar			int. 315 bar			min ⁻¹			I	II	III	I	II	III
AM80-1/3/9G	08.331G	I	II	III	I	II	III	I	II	III	I	II	III	I	II	III
AM80R-1/3/9G	08R331G	250	825	2340	375	1240	3510	1000	296	105	0,079	0,267	0,754	1:1	1:3,375	1:9,550
AM110-1/3/9G	11.331G	350	1165	3300	525	1750	4950	1000	296	105	0,111	0,375	1,060	1:1	1:3,375	1:9,550
AM110R-1/3/9G	11R331G															