



Shiftable planetary gear reducer

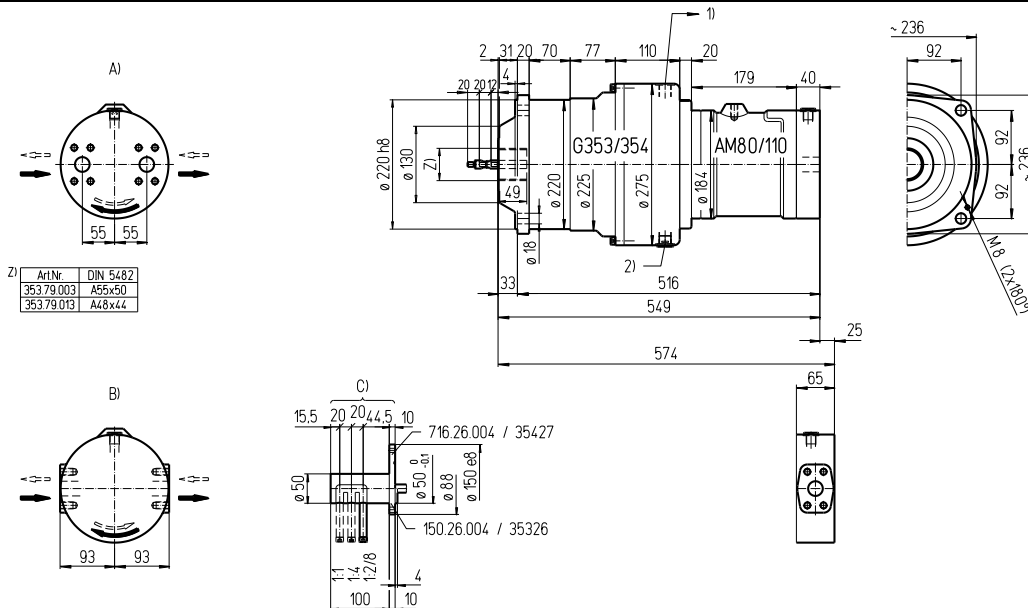
Data sheet

Md_{cont. max} 2'630 Nm

Md_{int. max} 3'940 Nm

08.353G

english / 20120816/Wa



Oil connections:

A) SAE 1" (420 bar) axial (08.353G) ISO 6162-2

DN25 42 MPa

B) SAE 1" (420 bar) radial (08R353G) ISO 6162-2

DN25 42 MPa

1) Drain G1/2

2) Oil drain G1/2

C) Gear shift according drawing no. 203.98.3

Important instructions:

Observe our installation and operating instructions

Before start up fill planetary gear with oil

Oil filling: approx. 6 Liter

Weight: approx. 118 kg

Fastening screw: M16 - 12.9 // Tightening torque: 365 Nm

Gear shifting only while standstill

Possible special design:

- 2 position gear shift

- Fix gear ratio (without gear shift)

Technical data:

Denomination	EDV-No.	Output torque Nm						Output speed			Displacement Liter / rev.			Ratio		
		cont. 210 bar			int. 315 bar			min ⁻¹			I	II	III	I	II	III
AM80-1/2/4G AM80R-1/2/4G	08.353G 08R353G	250	500	980	375	750	1470	1500	734	375	0,079	0,161	0,316	1:1	1:2,043	1:4,000
AM80-1/4/8G AM80R-1/4/8G	08.354G 08R354G	250	980	1865	375	1470	2800	1800	450	237	0,079	0,316	0,601	1:1	1:4,000	1:7,609
AM110-1/2/4G AM110R-1/2/4G	11.353G 11R353G	350	700	1380	525	1060	2070	1500	734	375	0,111	0,227	0,444	1:1	1:2,043	1:4,000
AM110-1/4/8G AM110R-1/4/8G	11.354G 11R354G	350	1380	2630	525	2070	3940	1800	450	237	0,111	0,444	0,845	1:1	1:4,000	1:7,609