



Shiftable planetary gear reducer

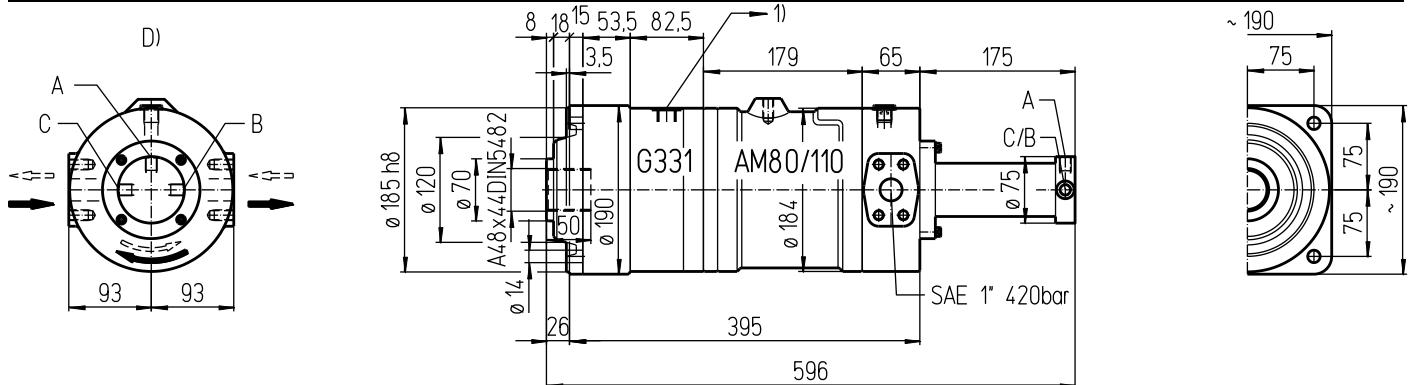
Data sheet

Md_{cont. max} 3'300 Nm

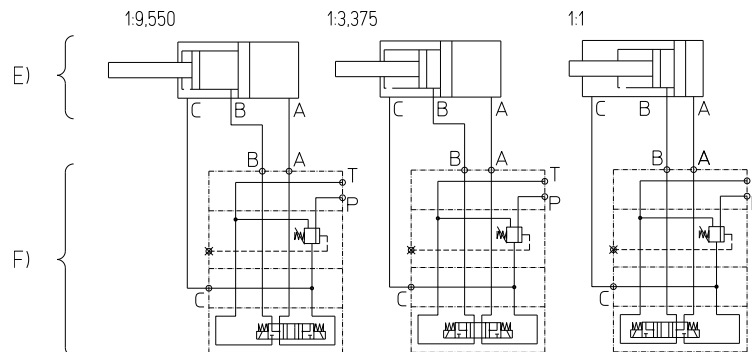
Md_{int. max} 4'950 Nm

08Z331

english / 20120820/Wa



Hydraulic diagram



Oil connections:

- 1) Drain G1/2
- A B C) Valve unit cylinder G1/4
- D) SAE 1" (420 bar) radial ISO 6162-2 DN25 42 MPa
- P T) valve unit G1/4

E) Hydraulic gear shift cylinder EDV-Nr. 9500140

F) Valve unit EDV-Nr. 9500141

Important instructions:

- Observe our installation and operating instructions
- Before start up fill planetary gear with oil
- Oil filling: approx. 3 Liter
- Weight: approx. 70 kg
- Fastening screw: M12 - 12.9 // Tightening torque: 150 Nm
- Gear shifting only while standstill

Possible special design:

- 2 position gear shift
- Fix gear ratio (without gear cylinder)

Technical data:

Denomination	Output torque Nm	Output speed			Displacement Liter / rev.			Ratio								
		cont. 210 bar	int. 315 bar	min ⁻¹	I	II	III	I	II	III						
Type	EDV-No.	I	II	III	I	II	III	I	II	III	I	II	III	I	II	III
AM80-1/3/9Z	08Z331	250	825	2340	375	1240	3510	1000	296	105	0,079	0,267	0,754	1:1	1:3,375	1:9,550
AM110-1/3/9Z	11Z331	350	1165	3300	525	1750	4950	1000	296	105	0,111	0,375	1,060	1:1	1:3,375	1:9,550