



# Shiftable planetary gear reducer

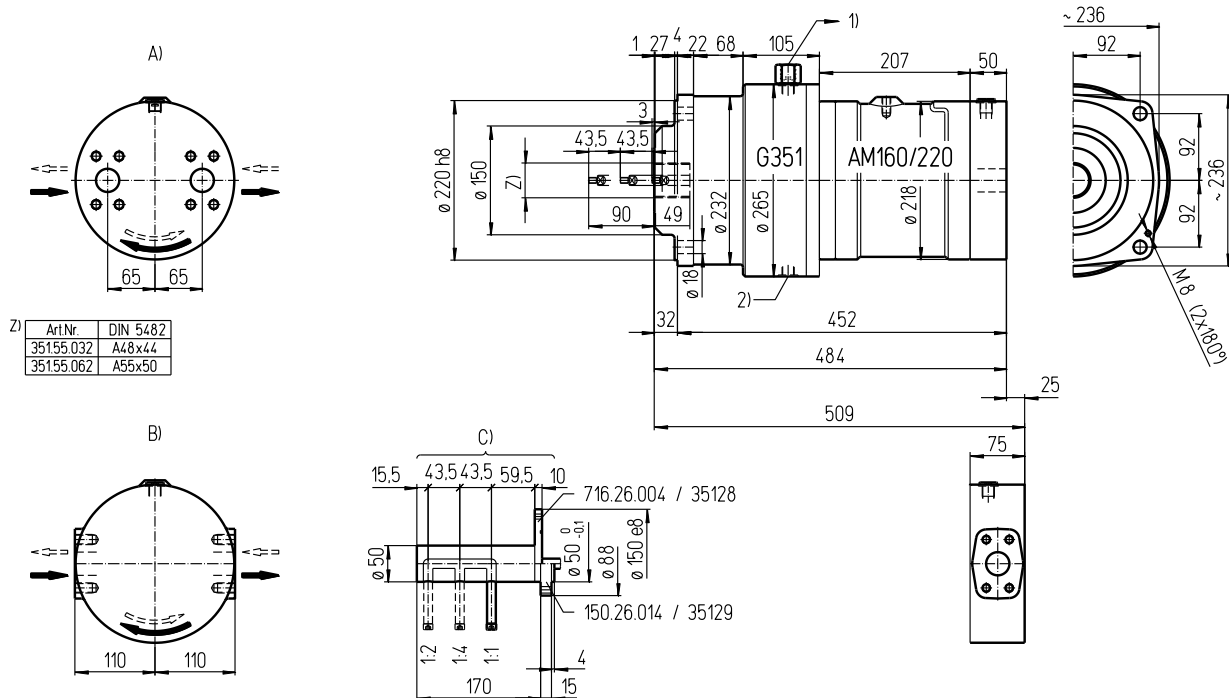
# Data sheet

**Md<sub>cont. max</sub> 3'155 Nm**

**Md<sub>int. max</sub> 4'725 Nm**

**16.351G**

english / 20120816/Wa



### Oil connections:

- A) SAE 1 1/4" (420 bar) axial (16.351G) ISO 6162-2  
DN25 42 MPa
- B) SAE 1 1/4" (420 bar) radial (16R351G) ISO 6162-2  
DN25 42 MPa
- 1) Drain G1/2
- 2) Oil-drain plug G3/8

C) Gear shift according drawing no. 203.96.3

### Important instructions:

- Observe our installation and operating instructions
- Before start up fill planetary gear with oil
- Oil filling: approx. 7,5 Liter
- Weight: approx. 95 kg
- Fastening screw: M16 - 12.9 // Tightening torque: 365 Nm
- Gear shifting only while standstill

### Possible special design:

- 2 position gear shift
- Fix gear ratio (without gear shift)

### Technical data:

Denomination	EDV-No.	Output torque Nm						Output speed			Displacement Liter / rev.			Ratio		
		cont. 210 bar			int. 315 bar			min <sup>-1</sup>			I	II	III	I	II	III
AM160-1/2/4G	16.351G	500	1105	2305	750	1655	3455	1000	444	208	0,158	0,356	0,758	1:1	1:2,253	1:4,800
AM160R-1/2/4G	16R351G															
AM220-1/2/4G	22.351G	685	1510	3155	1025	2265	4725	1000	444	208	0,216	0,487	1,037	1:1	1:2,253	1:4,800
AM220R-1/2/4G	22R351G															