



# Shiftable planetary gear reducer

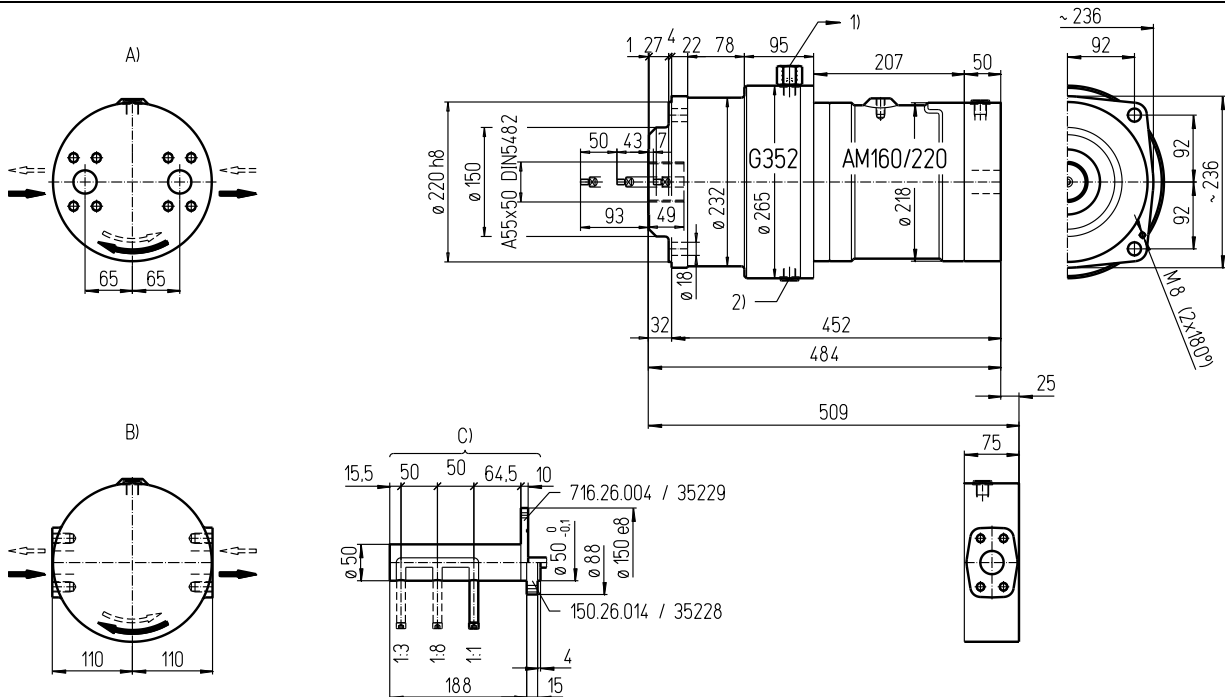
# Data sheet

**Md<sub>cont. max</sub>** 5'590 Nm

**Md<sub>int. max</sub>** 8'365 Nm

**16.352G**

english / 20120817/Wa



**Oil connections:**

A) SAE 1 1/4" (420 bar) axial (16.352G) ISO 6162-2

DN25 42 MPa

B) SAE 1 1/4" (420 bar) radial (16R352G) ISO 6162-2

DN25 42 MPa

1) Drain G1/2

2) Oil-drain plug G3/8

C) Gear shift according drawing no. 203.97.3

**Important instructions:**

Observe our installation and operating instructions

Before start up fill planetary gear with oil

Oil filling: approx. 7 Liter

Weight: approx. 100 kg

Fastening screw: M16 - 12.9 // Tightening torque: 365 Nm

Gear shifting only while standstill

**Possible special design:**

- 2 position gear shift

- Fix gear ratio (without gear shift)

**Technical data:**

Denomination	Output torque Nm	Output speed			Displacement Liter / rev.			Ratio								
		cont. 210 bar	int. 315 bar	min <sup>-1</sup>	I	II	III	I	II	III						
Type	EDV-No.	I	II	III	I	II	III	I	II	III	I	II	III	I	II	III
AM160-1/3/8G AM160R-1/3/8G	16.352G 16R352G	500	1890	4080	750	2835	6120	500	130	59	0,158	0,609	1,343	1:1	1:3,857	1:8,500
AM220-1/3/8G AM220R-1/3/8G	22.352G 22R352G	685	2590	5590	1025	3875	8365	500	130	59	0,216	0,833	1,836	1:1	1:3,857	1:8,500