



Shiftable planetary gear reducer

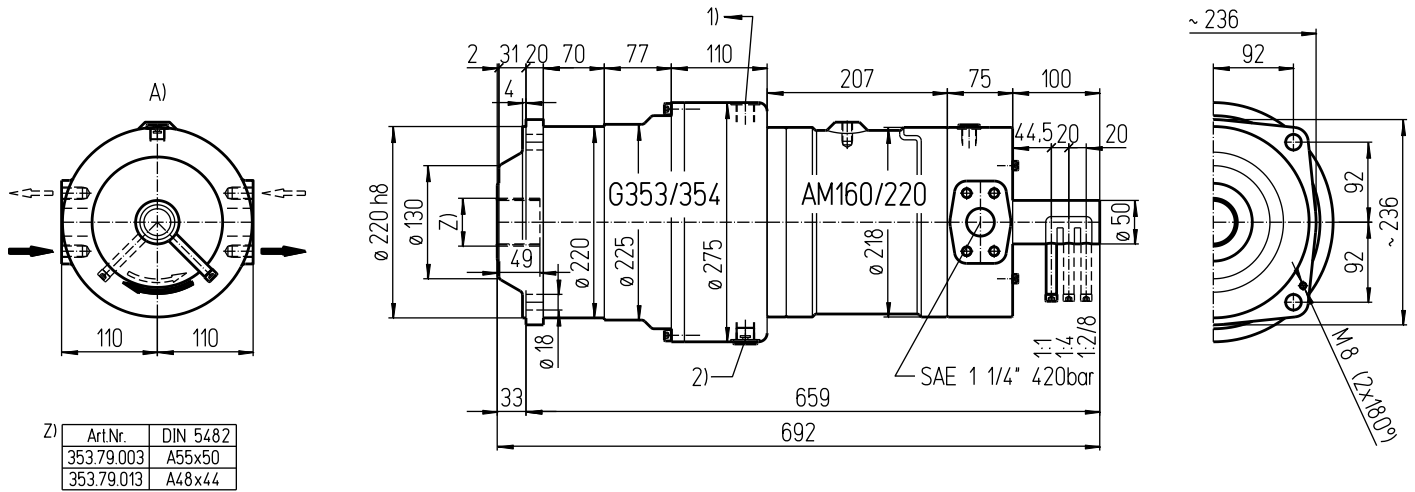
Data sheet

Md_{cont. max} 5'100 Nm

Md_{int. max} 7'660 Nm

16K353

english / 20120817/Wa



Oil connections:

A) SAE 1" (420 bar) radial ISO 6162-2 DN25 42 MPa

1) Drain G1/2

2) Oil-drain plug G1/2

Important instructions:

Observe our installation and operating instructions

Before start up fill planetary gear with oil

Oil filling: approx. 8 Liter

Weight: approx. 127 kg

Fastening screw: M16 - 12.9 // Tightening torque: 365 Nm

Gear shifting only while standstill

Possible special design:

- 2 position gear shift

- Fix gear ratio (without gear shift)

Technical data:

Denomination	Output torque Nm	Output speed			Displacement Liter / rev.			Ratio								
		cont. 210 bar	int. 315 bar	min ⁻¹	I	II	III	I	II	III						
Type	EDV-No.	I	II	III	I	II	III	I	II	III	I	II	III	I	II	III
AM160-1/2/4 MK	16K353	500	1000	1960	750	1500	2950	1500	734	375	0,158	0,323	0,632	1:1	1:2,043	1:4,000
AM160-1/4/8 MK	16K354	500	1960	3730	750	2950	5600	1500	375	197	0,158	0,632	1,202	1:1	1:4,000	1:7,609
AM220-1/2/4 MK	22K353	685	1370	2690	1025	2060	4030	1500	734	375	0,216	0,441	0,864	1:1	1:2,043	1:4,000
AM220-1/4/8 MK	22K354	685	2685	5100	1025	4030	7660	1500	375	197	0,216	0,864	1,644	1:1	1:4,000	1:7,609