



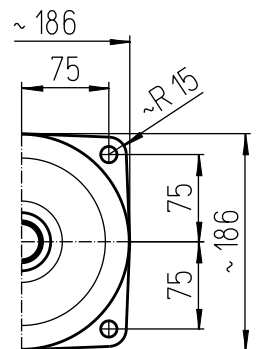
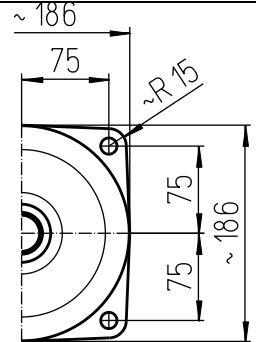
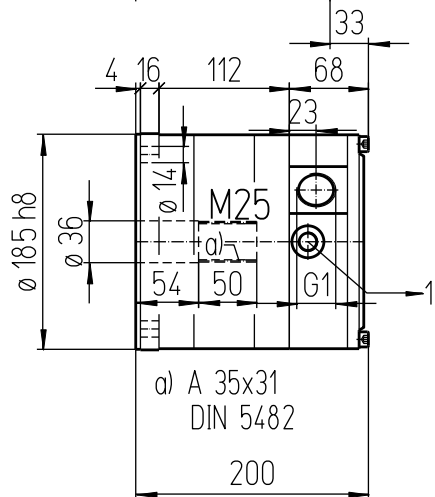
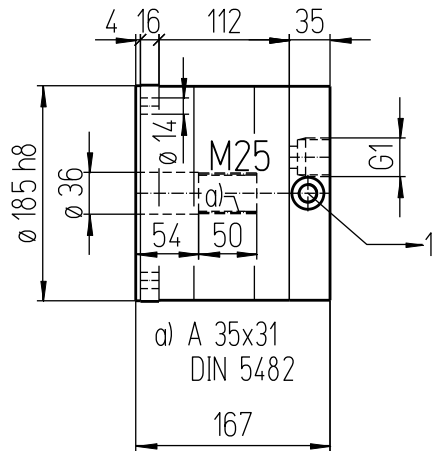
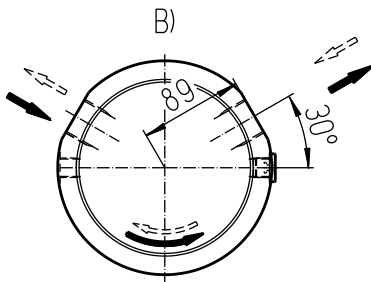
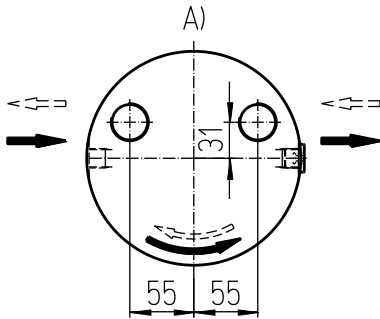
# Hydraulic motor series m

# Data sheet

**Md<sub>cont. max</sub> 245 Nm**  
**Md<sub>int. max</sub> 355 Nm**

**3**

english\_20120823/Wa



**Important instructions:**

- Observe our installation and operating instructions
- Before start up fill hydraulic motor with oil
- Oil filling: ca. 1,2 Liter
- Weight: ca. 29,4 kg
- Fastening screw: M12 - 12.9 // Tightening torque: 150 Nm

**Oil connections:**

- A) Axial
- B) Radial
- 1) Drain G3/8

**Possible special design:**

- Hollow shaft
- Second shaft extension
- Adaptation and mounting of brakes, non-return devices, tacho sensor

**Technical data:**

Denomination		Output torque		Torque constant	Output speed		Displacement	Mass moment of inertia	Oil connections
Type	EDV-No.	Nm		Nm/bar	min <sup>-1</sup>		cm <sup>3</sup>	kgm <sup>2</sup>	
		cont.	int.		cont.	int.			
M25	3	145 bar	210 bar						axial
M25R	3R	245	355	1,692	750	1000	112	0,002	radial