



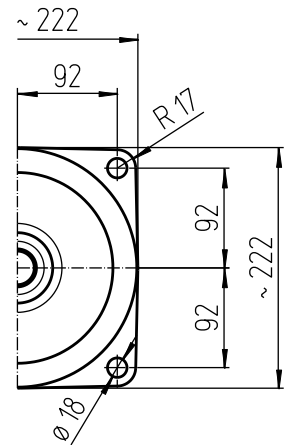
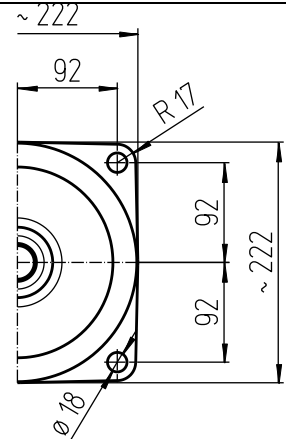
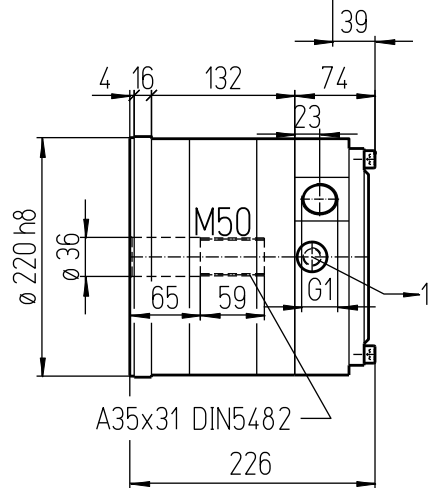
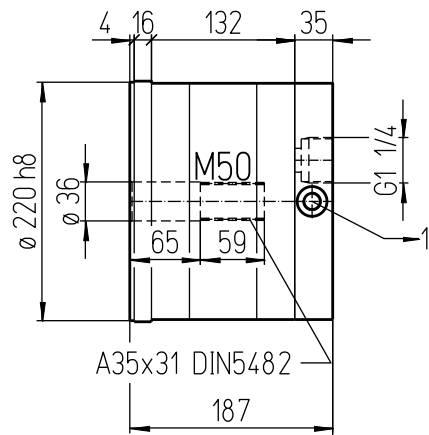
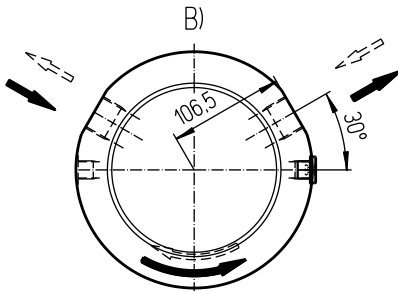
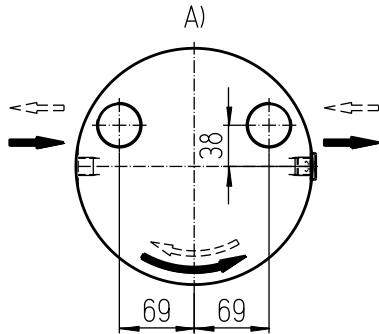
# Hydraulic motor series m

# Data sheet

**Md<sub>cont. max</sub> 490 Nm**  
**Md<sub>int. max</sub> 710 Nm**

**5**

english\_20120823/Wa



**Important instructions:**

Observe our installation and operating instructions

Before start up fill hydraulic motor with oil

Oil filling: ca. 1,62 Liter

Weight: ca. 48 kg

Fastening screw: M16 - 12.9 // Tightening torque: 365 Nm

**Oil connections:**

A) Axial

B) Radial

1) Drain G3/8

**Possible special design:**

- Hollow shaft
- Second shaft extension
- Adaptation and mounting of brakes, non-return devices, tachosensor

**Technical data:**

Denomination		Output torque		Torque constant	Output speed		Displacement	Mass moment of inertia	Oil connections
Type	EDV-No.	Nm		Nm/bar	min <sup>-1</sup>		cm <sup>3</sup>	kgm <sup>2</sup>	
		cont. 145 bar	int. 210 bar		cont.	int.			
M50	5	490	710	3,38	750	1000	224	0,007	axial
M50R	5R								radial